

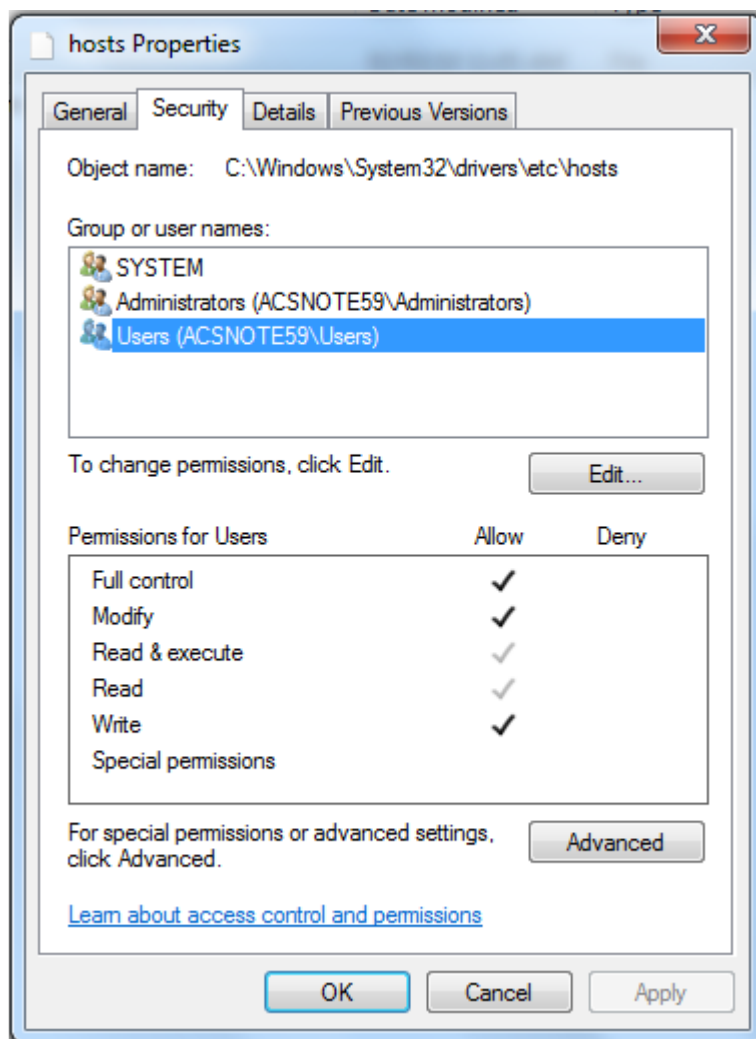
Embrace Desktop Setup for Windows Vista and Windows 7

Certain security settings in Windows Vista and Windows 7 need to be relaxed in order for the Embrace Desktop to operate correctly.

These changes should be implemented before the Embrace Desktop is installed.

hosts file security settings

Permission needs to be given for all users to write the hosts file in the C:\Windows\System32\drivers\etc subdirectory. This allows the network configuration settings for the Embrace Desktop to be saved correctly.



ACS sub-directory security settings

Permission needs to be given for all users to write in the ACS subdirectory under C:\Program Files

A number of processes within the Embrace Desktop require access to this subdirectory, specifically during version checking and report downloads. Whilst the Embrace Desktop may run without these changes, certain processes will fail, including the abovementioned.

